

## Barcode Software Module

The Barcode software module can be used for many code recognition purposes, in the most diverse applications.

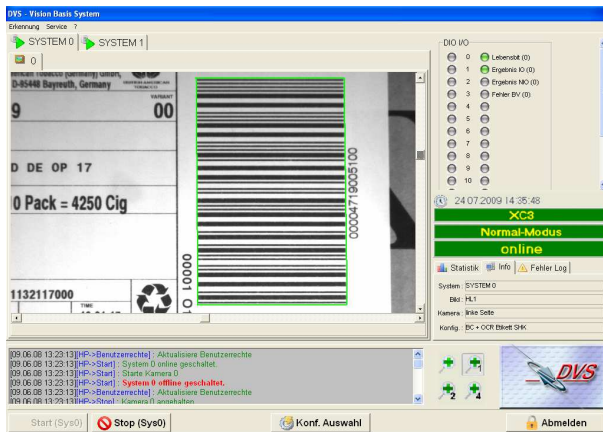
### Features

Supported codes:

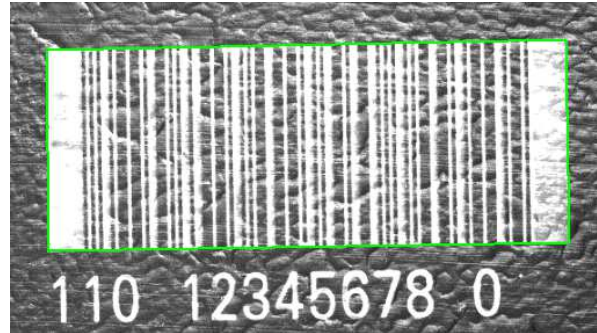
- Code 39, Code 128, EAN 8, EAN 13, EAN 128, UPCE, Interleaved 2 of 5, Codabar, PharmaCode
- Postal Codes - USPS PostNet, USPS IMB

- Multi-read function for reading multiple codes in an image
- Omni-directional
- Automatic code type recognition
- Code type can be set
- Automatic correction of distortions in the perspective, code damage and light changes
- Code adherence check, using a comparison code
- Check of code twisting
- Code angle can be displayed over interfaces

It can be parameterized that in read mode the system reads and displays the code content, and/or OK/NOK (for read/not read) or alternatively in comparison mode code content is checked.



Screen Barcode Recognition

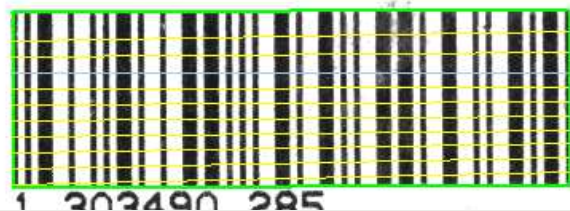


Recognition example: lasered barcode on plastic material

### Code-Surveyor 1D (Barcode Module enhancement)

- Quality control for objective code evaluation based on DIN ISO15416/ANSI X3.182-1990/ANSI/UCC5-1995
- Digital output signal when a parameterized quality threshold is reached
- Single and complete evaluation of the quality grades

1\_Art.-Nr.-Kennz



### Checked parameters:

- Decoding D
- Symbol contrast SC
- Minimal reflection Rmin
- Global threshold GT
- Minimum edge contrast ECmin
- Modulation MOD
- Defects M and
- Decodability V.

*keeping an eye on quality*