

Web material inspection

The OmniPro web material system because of the modular structure can be optimally adjusted for all sorts of production environments and web widths. This way the most diverse sorts of material can be controlled.

Besides for quality control the inspection results can be used for production optimisation. This allows immediate intervention or deficient product rejection.



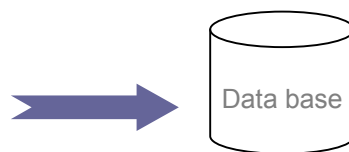
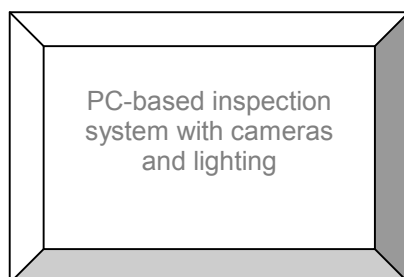
Features

- Economical high speed Vision System for 100% product check
- Failure detection in real time
- Failure classification
- Different products easy to parameterise
- System is independent of changes in feed rate.
- Clearly arranged visualisation of measurement results in display program
- Retraceability in case of complaints

Failure

Different error types detectable e.g.:

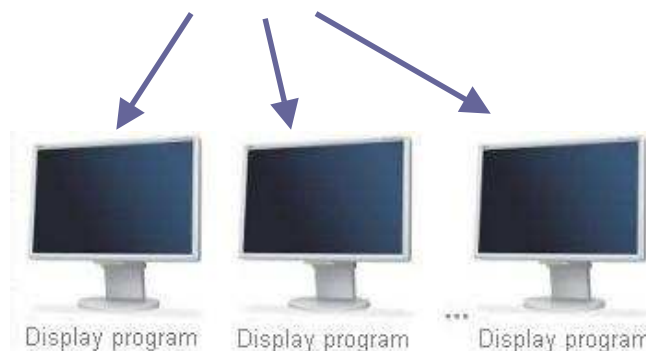
- Holes
- Thin/thick places
- Contaminations
- Cracks
- Crinkles
- Pattern damage
- Coating failure



Application range

- Textile
- Paper
- Airlaid
- Interlayer
- Plastics

The Measurement system write the results in a data base, which is visualized in display program.



keeping an eye on quality

Display program

For analysis of single failures and overall evaluation

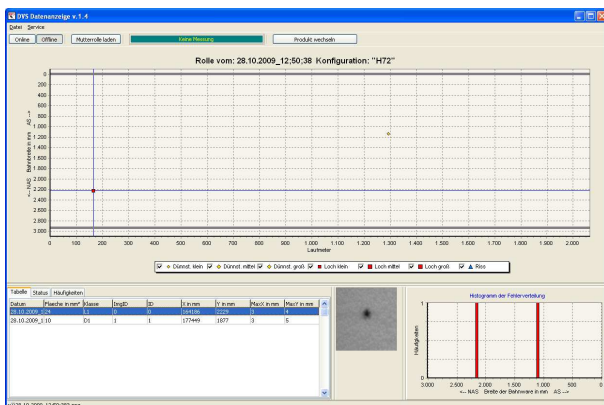
Visualising of:

- Type of failure/failure class chart
- Failure table, position, type and class of failure, failure spread and failure region
- Frequency distribution of failure type and class
- Image cutout with measurement function
- Batch status report



Airlaid inspection

The graphically data representation with a interactive failure chart, visualising the individual failure types and their distribution over the product, enables failure trace back up to their origin in the process. The measurement results are clearly and understandably represented, with details about running meter (inch), position and failures.

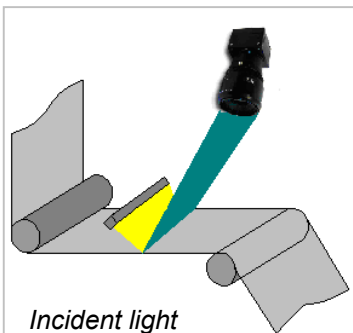


Display program with interactive failure chart

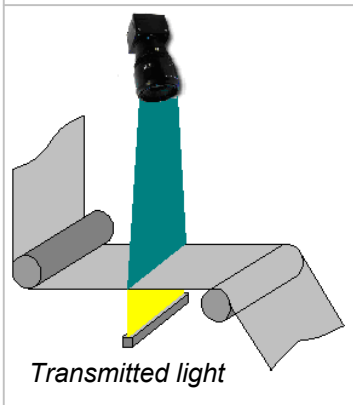
Camera and lighting

Dependent on the device to be controlled and the types of failures different configurations in reference to type, number and position of cameras and lighting can be applied. Process-related line scan cameras or area cameras will be used.

Number and resolution of the cameras depend on product size and lowest failure size to be detected, thereby aiming at a technically and economically optimal solution.



Incident light



Transmitted light

Measurement system

The PC-based vision system can, depended on the requirements, be delivered in different variants. As 19"-PC-System to integrate in a control cabinet or as compact control cabinet with touch screen monitor or as touch panel PC-system. Because of the applied GigE camera technic large cable lengths can be realised, which makes it possible to put the control PC in a distant control room. The system components can be delivered with degree of protection.

The exact system requirements will be determined together with the client.

keeping an eye on quality